

# SOUTH New generation USV

## SU20



**SOUTH**



Left old version: laptop,  
network bridge station, remote  
controller

Right, new version: Android  
remote controller, onboard  
survey and USV control  
software

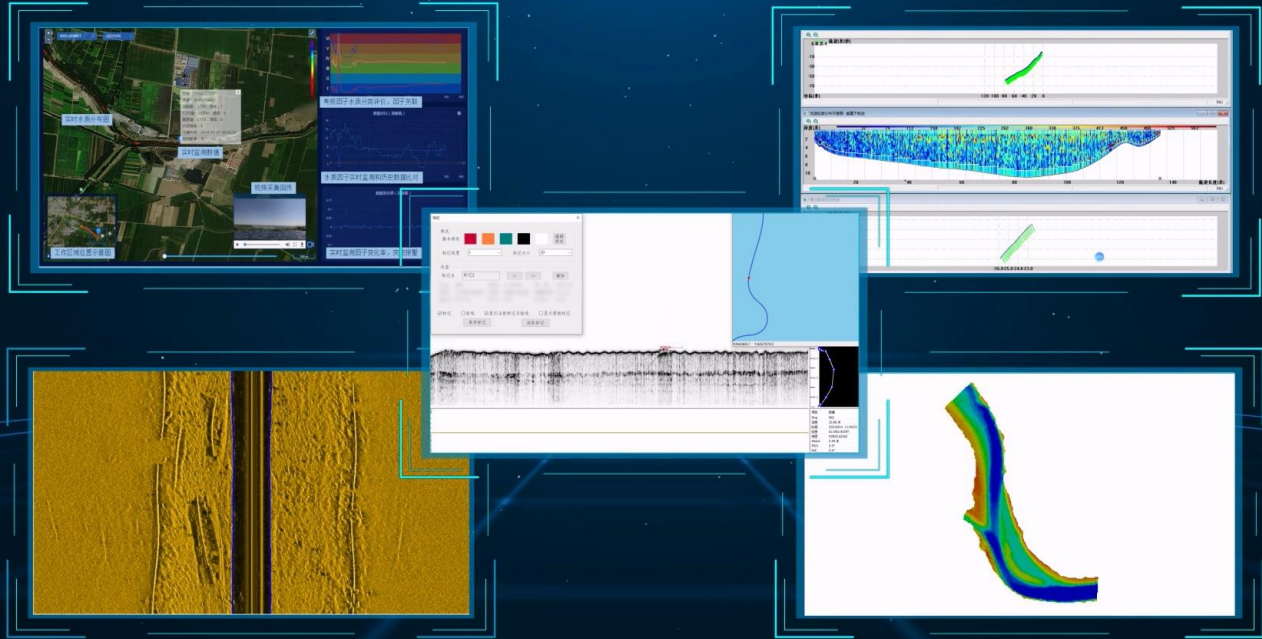


Convenient  
operation at  
field

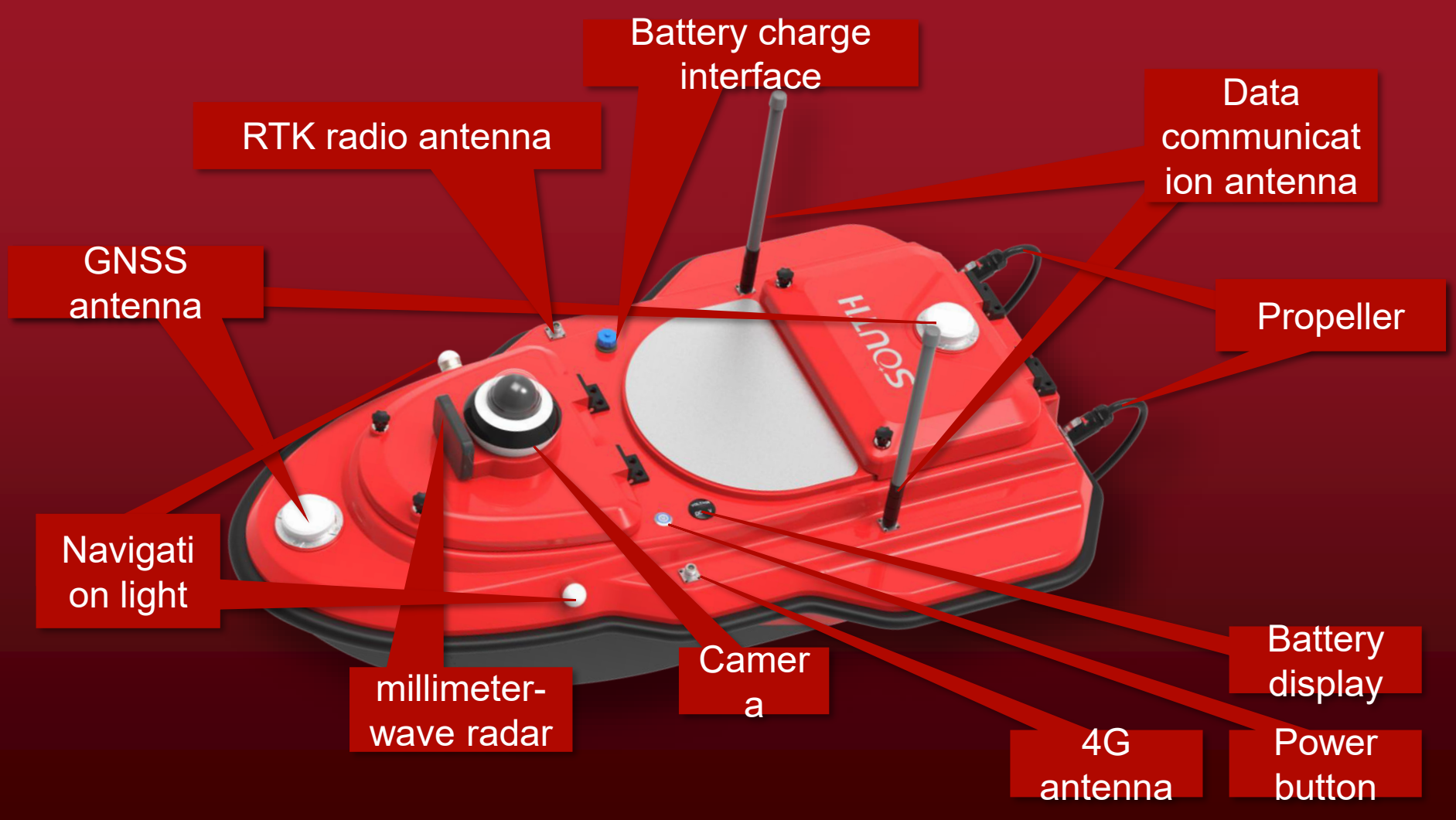


No laptop, no network station

Echo sounder  
ADCP  
Sub bottom Profiler  
Side scan  
Multibeam echo  
sounder



Multiple application in SU20



Battery charge interface

RTK radio antenna

Data communication antenna

GNSS antenna

Propeller

Navigation light

millimeter-wave radar

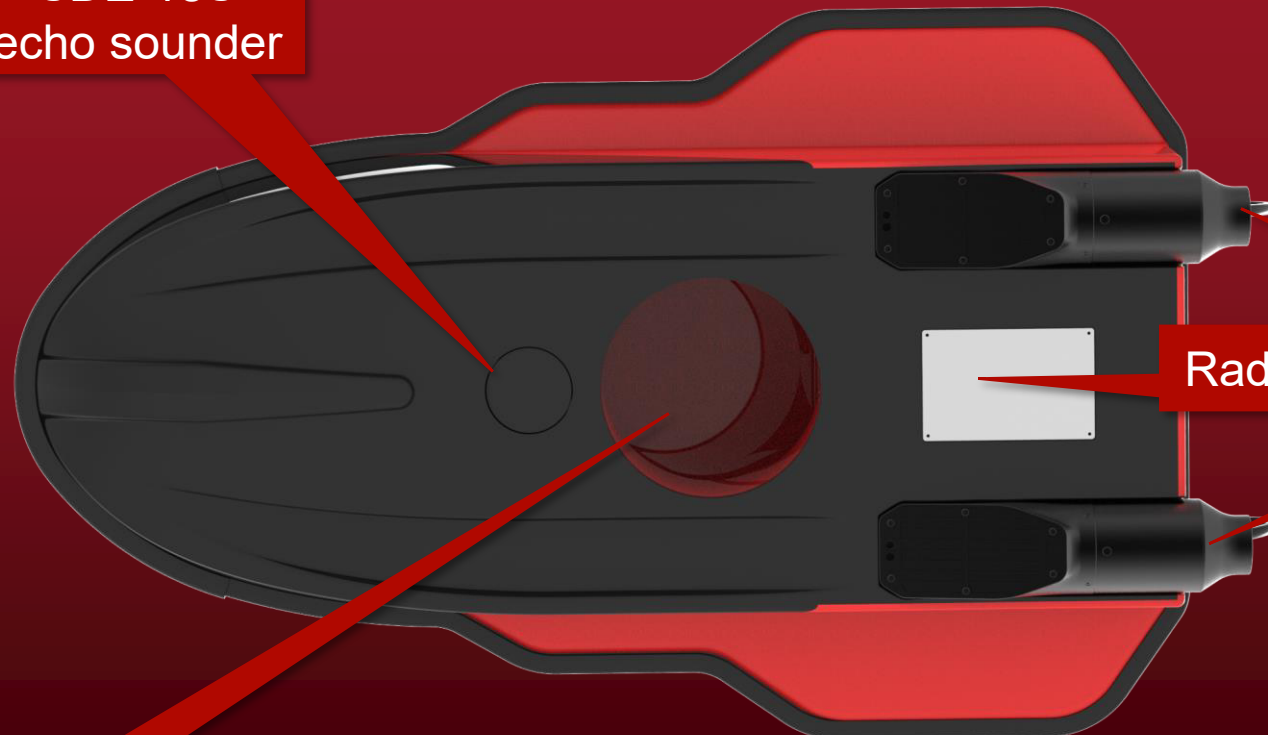
Camera

Battery display

4G antenna

Power button

SDE-18S  
echo sounder



Radiator

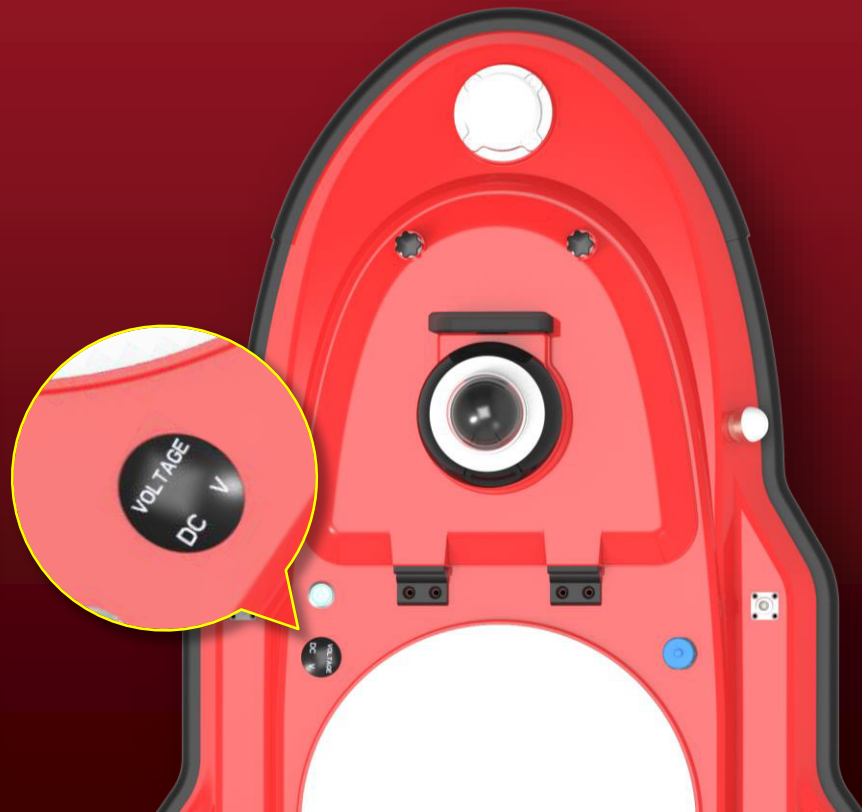
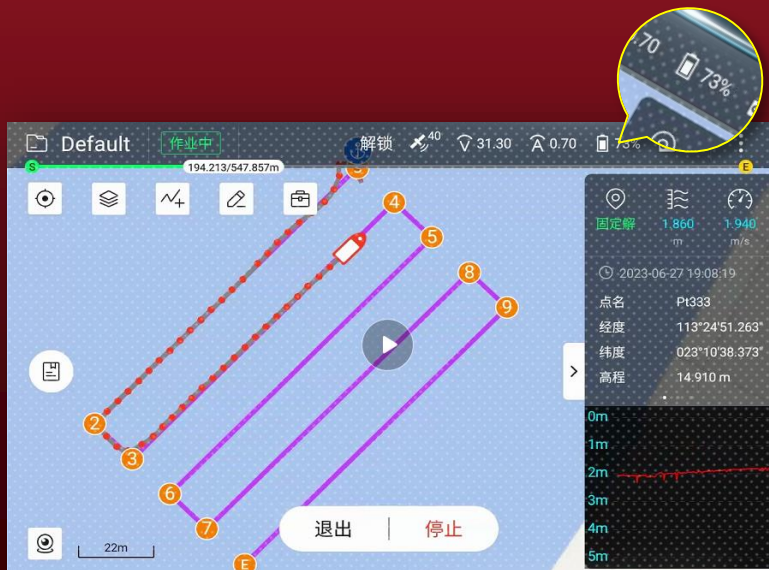
Propeller

Moon  
pool

# Battery status display



Both Android software and SU20 hull can display the battery status



# 4G communication

For no limited remote  
distance,  
Multiple data  
communication



SIM slot

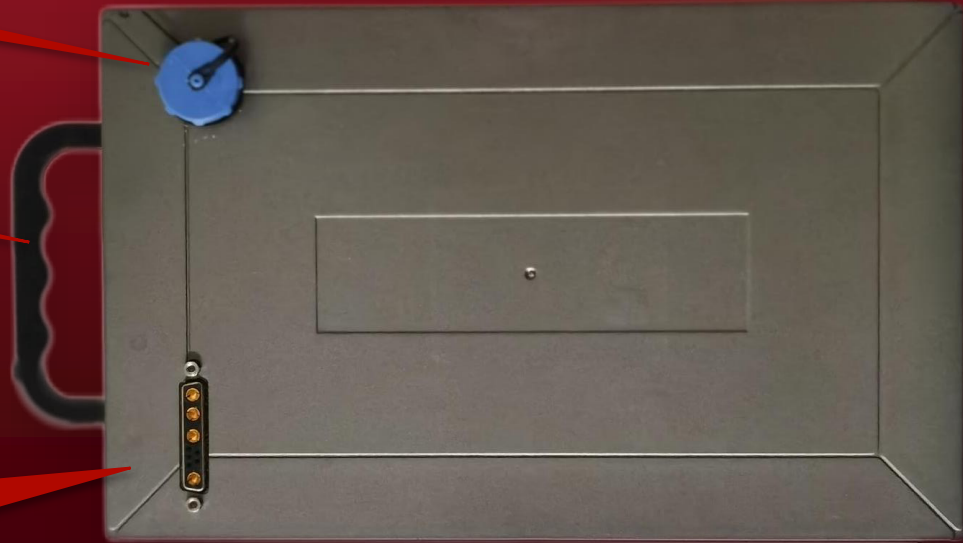


# Simply replaced battery

Charge  
interface

Handle

Power  
connection



# Double-deck hull design

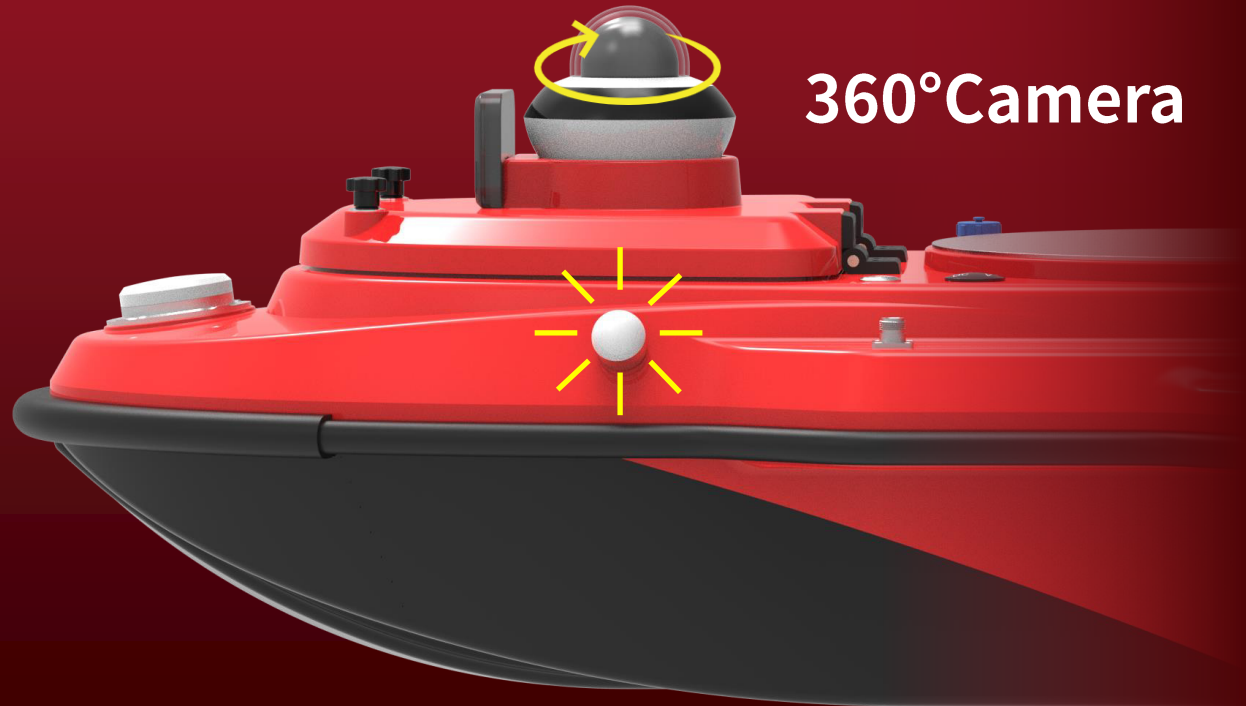
More safety, sink protection



双层三体船型设计

# Navigation light and camera

For long distance  
remote control



360° Camera

# High performance GNSS receiver

Dual antenna, stable heading output for better auto pilot performance

Support BD-3 signal and BDS-PPP for higher accuracy position



# High performance propeller



Maximum boat speed 7m/s  
For complicated water environment



Modularized design  
propeller  
For simply maintenance



Anti-waterweeds  
filter

# Moon pool

USV Platform for kinds of devices combination



ADCP



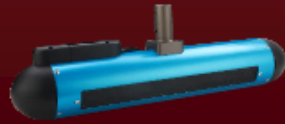
Sub Bottom Profiler



Dual frequency echo sounder



Water quality sensor



Side scan sonar



Multi-beam echo sounder



# Integrated the SDE-18S



# Ternary lithium battery



High performance, 4-5 hours working time in auto pilot mode



Battery handle, simple replacement



Stable connection, safety power supply





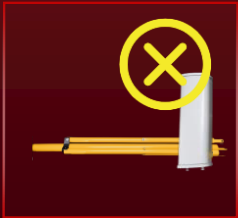
# All in one data link



Network  
bridge: 2KM



3/4G: no  
distance  
limitation



No network station, laptop and Windows  
software at field

# Android remote and survey controller



9.2 inch LCD screen, convenient for software operation



Support external disk storage



Support 3G/4G communication



Realtime camera display in survey software



# Controller operation

H speed  
M speed  
L speed

Unlock  
Lock

Forward  
Backward

Auto  
Manual  
Hover

On/off

Left/  
Right



# Shallow water alarm

Avoid and protect  
USV and loaded  
devices



# Back home point

Disconnect

Low power

Automatically

back the home point



# Android control and survey software

SOUTH development

USV control configuration

Auto pilot

Data communication and  
collection

Navigation and plan lines

ALL in one design



**Q&A**  
**THANKS!**