

## SPECIFICATIONS

### Measurements

#### Frequency

200 kHz

#### Beam Angle

7

#### Depth Resolution

0.1ft/0.01m

#### Accuracy

±1cm±0.1 D (0.1% of depth value)

#### Ping Rate

14Hz, Maximum 30Hz

#### Sound Velocity

1300-1700m/s, resolution is 1m/s

#### Depth Range

0.3-300m/900ft

#### Draft

0-9.9m

#### Gain Control

AGC and TVG, depth and gain, a double door tracking

#### Output data format

SOUTH, SDH-13D, DES025, INN455, ODOM etc

### Physical

#### Environmental

-30 ~+60 non-condensing

#### Output Power

Up to 300 watts

#### Power Supply

9-15V DC, less than 25w,

110~265V AC (optional),

#### Dimension

35cm 29cm 14cm

#### Weight

7.5kg

### Hardware part

#### Embedded system index

CPU frequency 1.6GHz

Internal memory 2G

Memory capacity 8G high-speed CF card

(supports extended storage)

#### I/O interface

2 USB

2 RS232

1 VGA interface

#### Display Panel Layout

12.1-inch color LCD

Touch screen

Embedded windows XP OS

Power ON/OFF

Interface protection

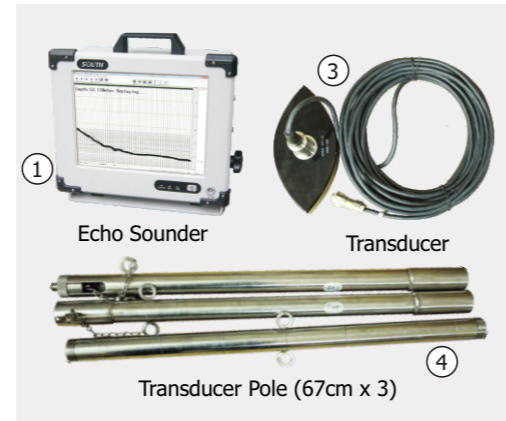
Separate Panel Overlay for

Keyboard

Mouse

### Remarks

Measurement accuracy and operation range might vary due to atmospheric conditions, signal multipath, obstructions, observation time, temperature, signal geometry and number of tracked satellites. Specifications subject to change without prior notice.



### STANDARD CONFIGURATION

1. Echo Sounder SDE-28S+	1pc
2. Carrying Case (for echo sounder)	1pc
3. 200KHz Transducer	1pc
4. Transducer Pole	1pc
5. Carrying Case for Transducer	1pc
6. Double RS-232 Communication Cable	1pc
7. 220V External Power Supply Cable	1pc
8. 220V External Power Supply Cable Adapter	1pc
9. 12V External Power Supply Transfer Cable	1pc
10. Keyboard (USB)	1pc
11. Mouse (USB)	1pc
12. Adapter Cable for Mouse & Keyboard	1pc
13. Pen Drive	1pc
14. SDE-28S+ Software	on board
15. PowerNav Software (with dongle key)	on board

Dealer info

**SOUTH**  
Target your success



# SDE-28S+

Single Frequency Digital Echo Sounder



**SOUTH**  
Target your success

**SOUTH SURVEYING & MAPPING INSTRUMENT CO.,LTD.**

Add: 2/F, Surveying Building (He Tian Building), NO.26, Ke Yun Road, Guangzhou 510665, China

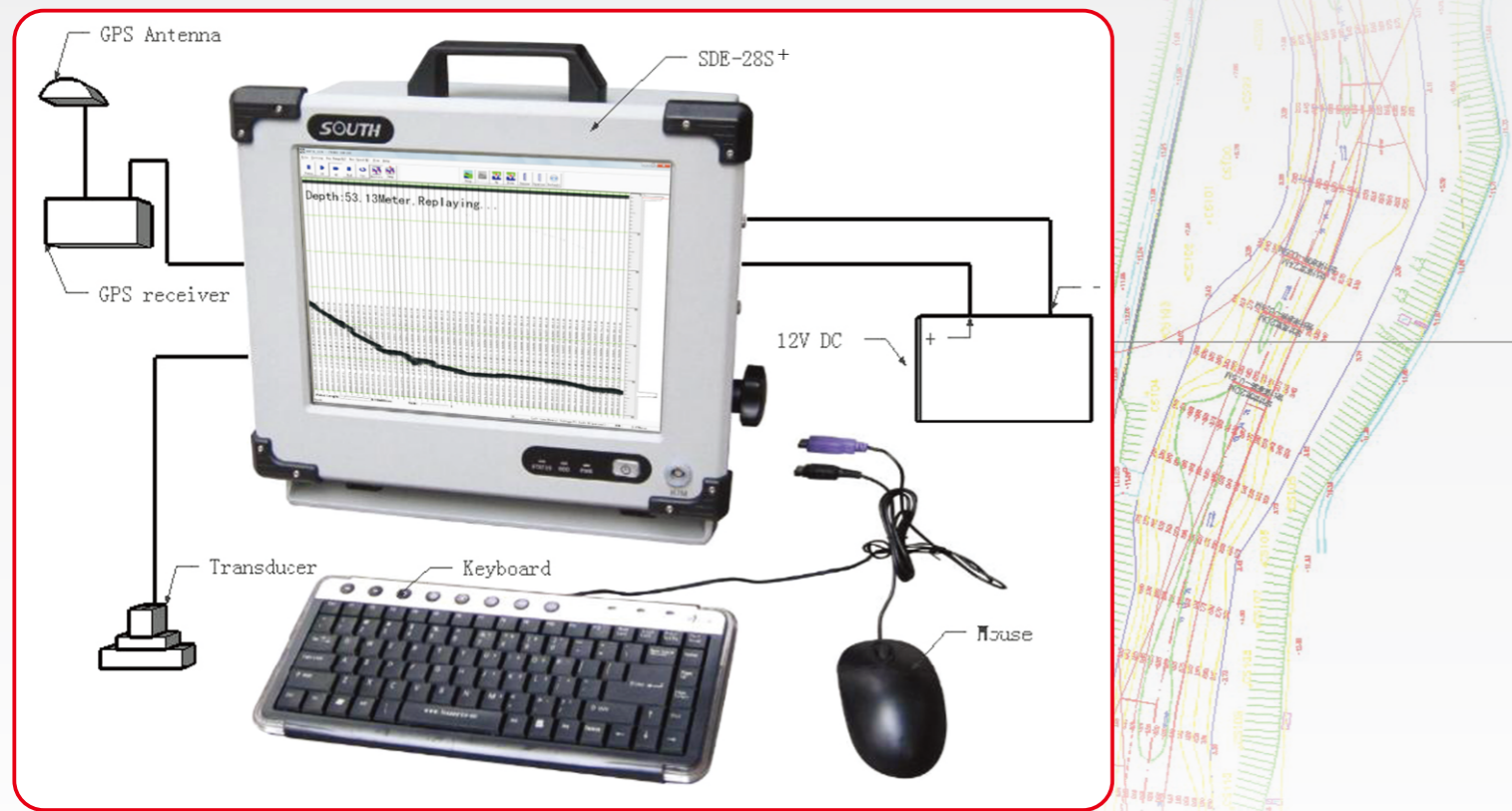
Tel: +86-20-23380891/85524990/23380888 Fax: +86-20-85524889/85529089/23380800

E-mail: mail@southsurvey.com export@southsurvey.com

http://www.southinstrument.com http://www.southsurvey.com

WWW.SOUTHINSTRUMENT.COM

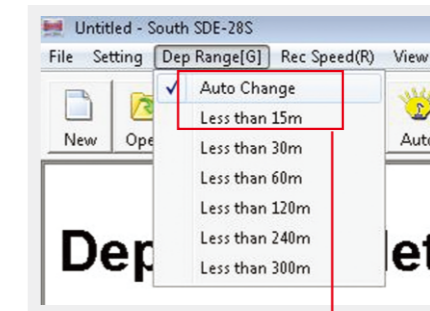
WWW.SOUTHSURVEY.COM



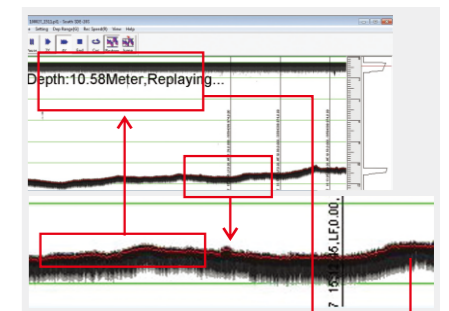
## ONBOARD SOFTWARE

### SDE-28S+ (for depth measurements)

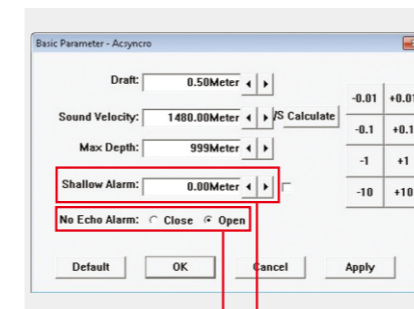
Real-time vivid display of graphic and data,  
 easy approach to underwater waves  
 Integrated sound velocity calculation for  
 more accurate results  
 Smart alarm for shallow water and “No  
 echo”  
 tracking to secure hydrographic operations  
 Real-time display of the water depth value  
 tracking lines, easy to be compared with  
 underwater waves  
 Automatic measurements and switch,  
 Intelligent operation, easy to use  
 Optional output formats and convenient



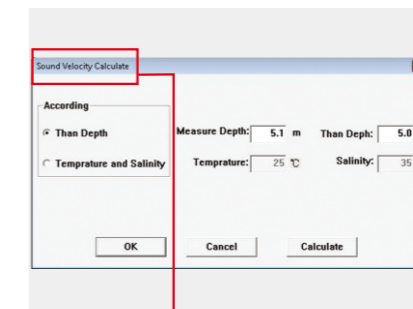
Auto Change  
Of Depth Range



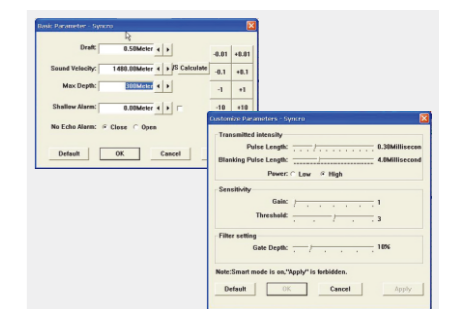
Real-time display of  
water depth data



“No Echo” Alarm Shallow-water Alarm



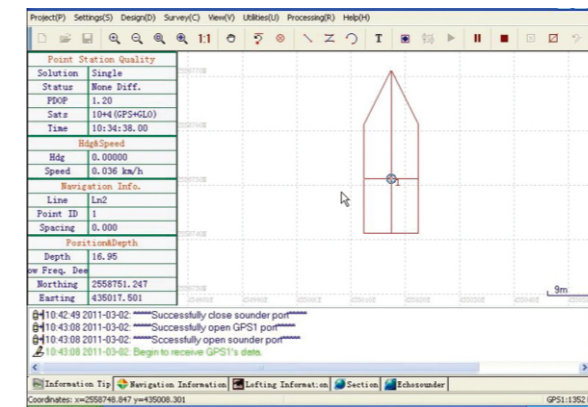
Sound Velocity Calculation



Basic and Customized Parameter Settings

## KEY FEATURES

- Embedded WindowsXP operating system, user-friendly interface
- Integrated with both computer and echo sounder at industrial level, yet low power consumption
- Full aluminum housing, compact and handy, particularly designed for less-than-ideal circumstances
- High-speed DSP chip processing technology to ensure reliable waveforms and depth values
- Supports NMEA-0183 communication to gain orientation information
- High compatibility, flexible to connect different GPS devices
- Built-in flash memory upgradeable to larger capacity for diverse demands
- 12.1-inch color LCD featuring a wide viewing angle and adjustable brightness
- Automatic storage of depth data up to 24 hours, supports replay

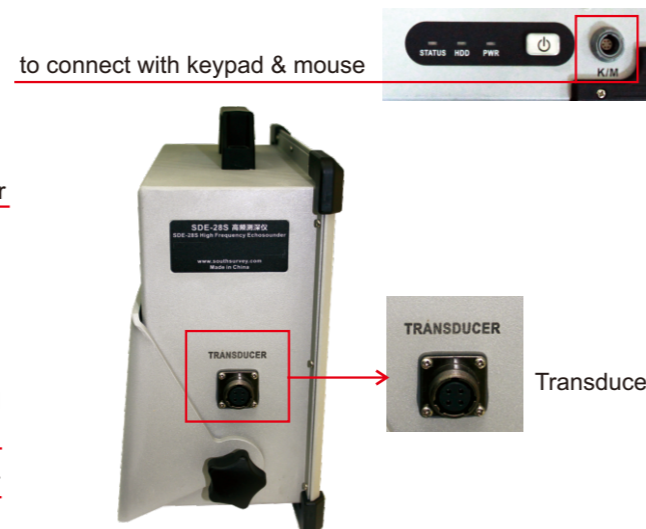
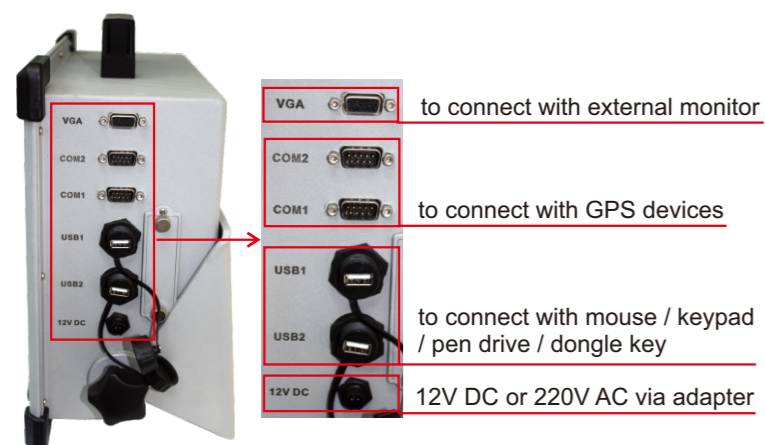


PowerNav

### PowerNav (for navigation purpose)

New software kernel, faster processing and more stable  
 Professional Engineering map sheet and data management, wizard-  
 style parameter setting  
 High compatibility, flexible to import graphs and data, connectible to  
 all GPS devices and echo sounders  
 Modular designed, meets diverse needs of hydrographic engineering  
 projects  
 Direct graphical navigation window box, auto voice prompt for yaw  
 Intelligent scheme line model, available for fast drawing of waterway,  
 Area, arc, etc.  
 Customized formats for data export edit, easy to export To all  
 Mapping software

## USER INTERFACES



## APPLICATIONS

Coastland, fairway depth measurements  
 Freshwater, lake, reservoir depth measurements  
 Dredging engineering measurements  
 Integrated automated depth measurement  
 (navigation measurement software required)  
 Positioning navigation terminal (compatible to all  
 GPS models with NMEA-0183 data exported) for  
 dredging engineering projects



A Variety of Solutions for Different Hydrographic Projects  
 (Note: different accuracy levels result from working with different GPS receivers.)